

### Test 3-2 Review

This is not a comprehensive review. MUST REVIEW ALL WORK AND EXAMPLES.

1)  $x = \frac{-b \pm \sqrt{b^2 - 4ac}}{2a}$

2) Discriminant:  $-4$ ; 2 imaginary Solutions

3) Use the Quadratic Formula to solve:

a.  $\{-2 \pm \sqrt{7}\}$

b.  $\left\{ \frac{5 \pm i\sqrt{39}}{4} \right\}$

c.  $\left\{ -\frac{1}{3}DR \right\}$

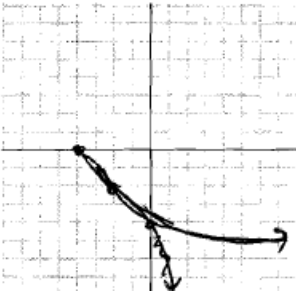
4)  $\{5.528\text{sec.}\}$ , 500.5 feet

5)  $\frac{x^7}{y^2}$

6)  $\frac{81x^8z^{12}}{y^4}$

7)  $\frac{2x\sqrt[3]{9}}{3}$

8)  $\frac{8}{81x^{16}y^8}$



9) Domain:  $[-4, \infty)$       Range:  $(-\infty, 0]$

10)  $\frac{32}{\pi^2}$  ft.

11)  $f(x) = \frac{1}{3}\sqrt{x-4} - 2$

12)  $f(x) = \sqrt{-x} + 5$

**Solve and list all extraneous solutions.**

13)  $\{19\}$

14)  $\{2, 8\}$

15)  $\{7\}$ , ext : 5

Look at old worksheets as well!