

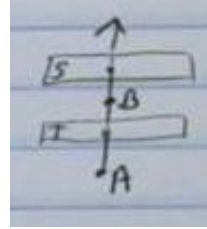
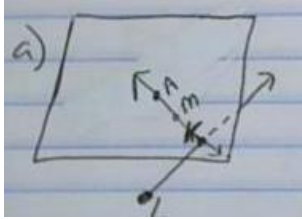
Test 1-2 Geometry PreAP Answer Key

1a) \overline{AC} or \overline{CA}

1b) BCE or BDE or CDE (in any order)

2)

3)



4) $AE = 35$

5) $CT = 33$

6) $KE = 34$ (Steps may vary)

Step	Reason
① En. dpt \overline{KY}	① Given
② $\overline{KE} \cong \overline{EY}$	② Def. midpoint
③ $KE = EY$	③ Def \cong
④ $KE + EY = KY$	④ Seg. Add. Post.
⑤ $9x - 2 + 9x - 2 = 15x + 8$	⑤ Subst. POE
⑥ $18x - 4 = 15x + 8$	⑥ CLT
⑦ $3x - 4 = 8$	⑦ Subtr. POE
⑧ $3x = 12$	⑧ Add POE
⑨ $x = 4$	⑨ Div POE
⑩ $KE = 9x - 2$	⑩ Given
⑪ $KE = 9(4) - 2$	⑪ Subst. POE
⑫ $KE = 34$	⑫ Simplify

7) $EO = 28$

8) $UC = 250$ or $BC = 22$

9) $y = 5$ or $y = 1$, $TX = 144$ or $TX = 8$

10) $x = 3$, $ABC = 46^\circ$

11) $x = 3$, ext.: 1. When 1 is plugged in, it does not equal to each other.

12) $x = \frac{32}{5}; m\angle SQR = 45^\circ$

13) $\{4\}, \text{ext} : -6; m\angle UYD = 18^\circ$

14 – 16) varied

17) $x = \frac{15}{2}; m\angle SOY = 62^\circ$

18) $x = 10$, Not a bisector because $m\angle TOU \neq m\angle UOD$

19) 140°

20) 49°

21) $55^\circ, 125^\circ$

22) $x = 3, y = 2, m\angle NAE = 54^\circ; m\angle RAN = 126^\circ$