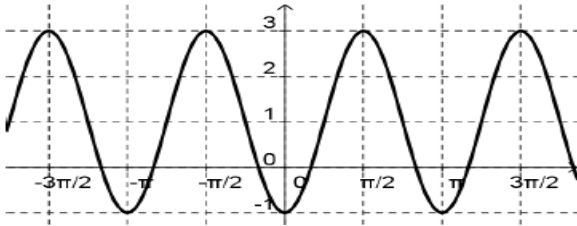


Complete the information for each graph and write its equation in terms of sine and/or cosine.

1)

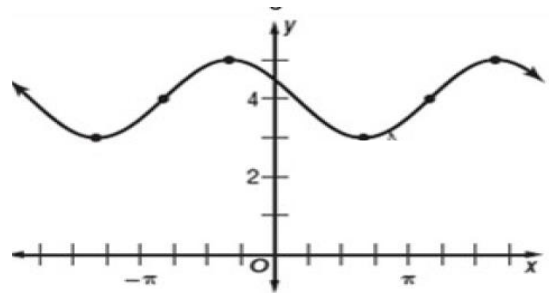


Amplitude: _____ Period: _____

Phase Shift: _____ Vertical Shift: _____

Cosine Equation: _____

2)

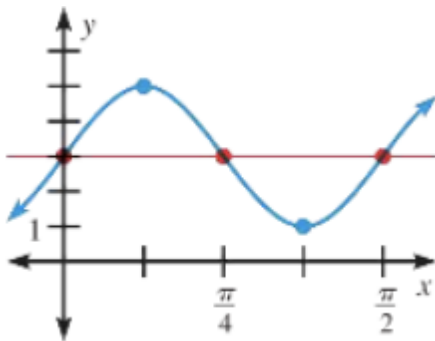


Amplitude: _____ Period: _____

Phase Shift: _____ Vertical Shift: _____

Sine Equation: _____

3)



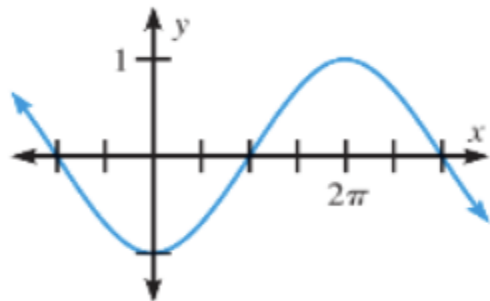
Amplitude: _____ Period: _____

Phase Shift: _____ Vertical Shift: _____

Cosine Equation: _____

Sine Equation: _____

4)



Amplitude: _____ Period: _____

Phase Shift: _____ Vertical Shift: _____

Cosine Equation: _____

Sine Equation: _____

Use the following information about the trig function to write a possible equation for each.

5) Sine function with amplitude of 7, period is 4π , and phase shift of left $\frac{\pi}{3}$

6) Cosine function with an amplitude of 1, period is 2π , phase shift is right $\frac{5\pi}{6}$ and vertical shift of up 3.

7) Cosine function with an amplitude of 3, period is π , phase shift is left π and vertical shift of down 1.5.